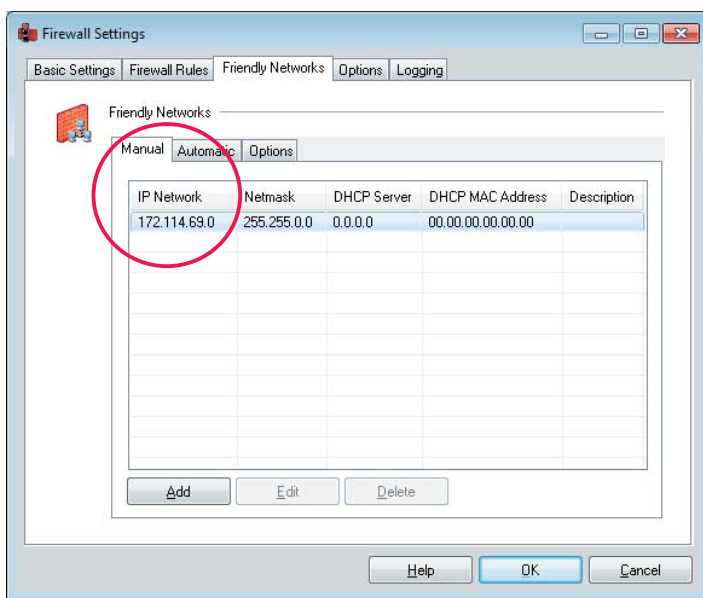


III. 1

## Example: Automatically Adapting Firewall Rules in Friendly Networks

The personal firewall of the client permits to set rules for three different network types. These networks are: VPN networks (data transfer in the VPN tunnel), friendly networks (e.g. the corporate or home network) and unknown networks (all others). New rules are set in the configuration menu item “firewall” by adding them in “firewall rules”. (Illustration 1)

As soon as a connection is established, the client detects to which kind of network the computer has connected to.

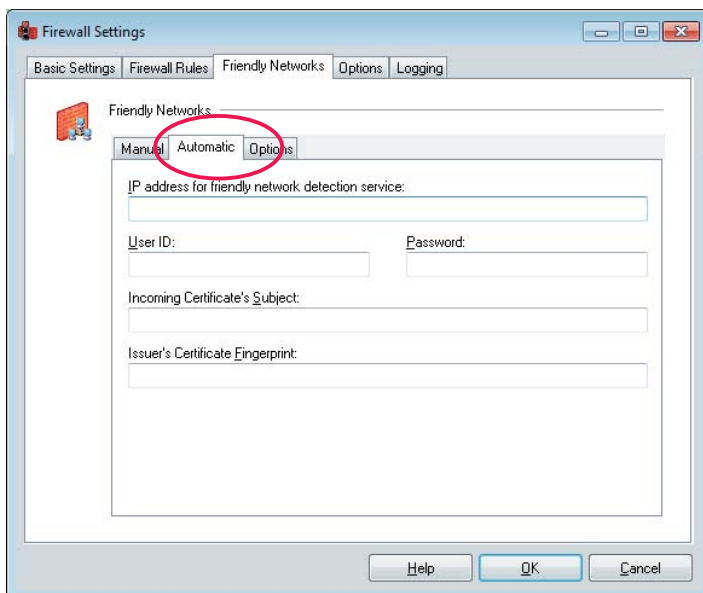


III. 2

### Friendly Networks

One or several parameters can be configured on the client manually. These parameters help the client to identify whether it has connected to a friendly network, e.g. the corporate network, or to an unknown Wi-Fi network at a hotspot. These parameters are entered in the configuration menu item under “Firewall / Friendly Networks / Manual” (Illustration 2)

- IP Network / Netmask
- IP Address of DHCP Server
- MAC Address of the DHCP Server

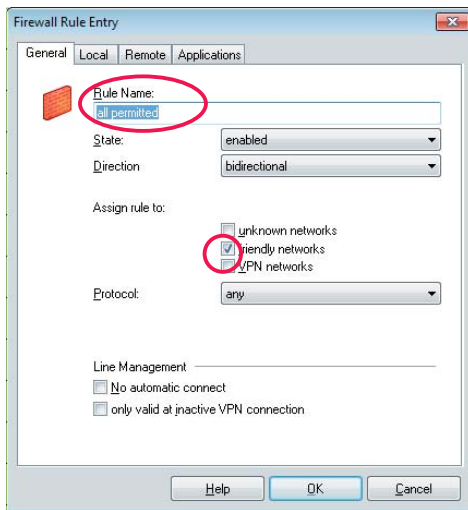


III. 3

Detection of friendly networks can be carried out automatically if a **Friendly Network Detection Server** (FND server) is used. The client has to be able to connect to the FND server via the “IP address (or the DNS name) for friendly network detection service”. User ID, password and possibly a certificate are stored on the FND server. This data has to correspond to the data which is to be entered in the respective fields of the client (Illustration 3). If the client is able to connect to a FND Server and if authentication is successful, the network adapter has connected to a friendly network.

### Setting up a Rule

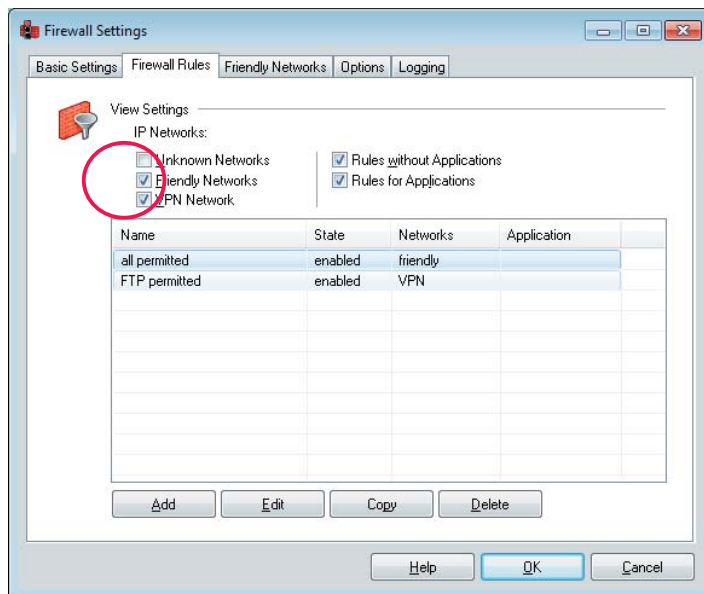
In order to create a rule for a friendly network, first enable “basic locked settings” in the configuration menu item of the monitor under “firewall”. This blocks all IP traffic for the time being.



III. 4

Add a rule under “firewall settings / firewall rules” (Illustration 4) Name the rule and define which actions are to be allowed by adapting the given parameters (please also refer to the online help file). In the end, assign the rule to friendly networks.

III. 5



After saving the rule by clicking “OK” you can see in the list of firewall rules, which rules are assigned to which network type (Illustration 5).

### Friendly Network Display on the Monitor



Whether or not the client has connected to a friendly network, you can see at the monitor or the tray icon of the client when the color of the firewall symbol has changed to green (Illustration 6).